



FIBER OPTIC

CABLE ASSEMBLIES

FIBER OPTIC OPTIONS & ACCESSORIES

To enhance performance and adaptability, TechniQuip offers a comprehensive range of fiber optic accessories engineered for precision lighting control.

Annular Ring Light Guides provide uniform 360° illumination, delivering consistent, shadowfree lighting for surface and edge inspection.

Goosenecks and Light Pipes feature flexible, positionable conduits that direct light exactly where it's needed, ideal for microscopy, metrology, and other high-detail applications.

Adapters and Cables ensure seamless integration and compatibility across a variety of illuminators and optical configurations.

For unique requirements, **Custom Solutions** are available. TechniQuip's engineering team collaborates directly with customers to design and manufacture application-specific components, optimizing optical performance and mechanical fit for specialized environments.



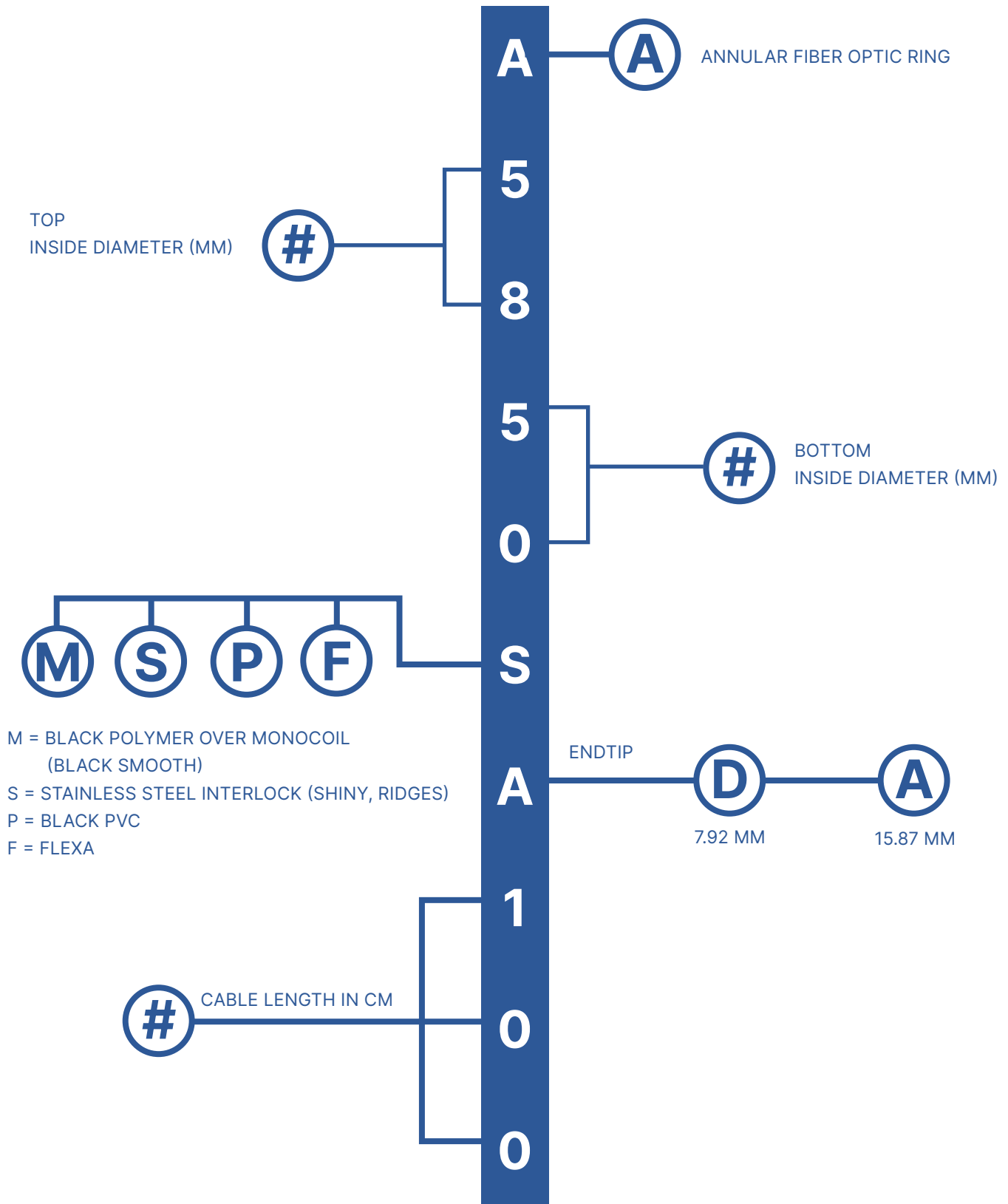
ANNULARS

FIBER OPTIC ANNULAR RINGS

TechniQuip's annulars provide 360 degree illumination at a range of focal lengths. Available with inside diameters ranging from 25 - 99 mm. A rugged black anodized aluminum housing contains and protects the Borosilicate fiber. Custom lengths available upon request.



ANNULAR FIBER RING SELECTION GUIDE



ANNULAR COMMON PART NUMBERS

DIAMETERS 21MM - 39MM - 1M STANDARD LENGTH (USE 30123177 ADAPTER)

PART NUMBERS	RING TOP I.D.	RING BOTTOM I.D.	INPUT END	FIBER TYPE	BUNDLE DIAMETER	CONE ANGLE	WORKING DISTANCE	STYLE	STANDARD SHEATHING
A2821MD100	28.5	21.0	7.9	Borosilicate Fiber	6.3	38	6	Step	Black Polymer Over Multi-Coil
A3328MD100	33.0	28.0	7.9	Borosilicate Fiber	6.3	20	15	Step	Black Polymer Over Multi-Coil
A4339MA100	43.0	39.3	15.9	Borosilicate Fiber	6.3	5	32	Step	Black Polymer Over Multi-Coil

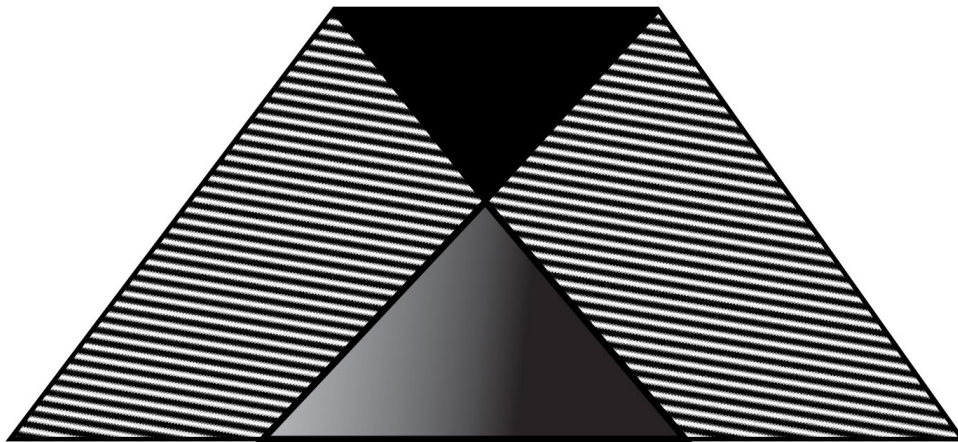
DIAMETERS 50MM - 66MM - 1M STANDARD LENGTH

PART NUMBERS	RING TOP I.D.	RING BOTTOM I.D.	INPUT END	FIBER TYPE	BUNDLE DIAMETER	CONE ANGLE	WORKING DISTANCE	STYLE	POLARIZER PART NUMBERS	STANDARD SHEATHING
A5351FA036	53.1	50.8	15.9	Borosilicate Fiber	9.4	10	32.0	Step	N/A	Flexa
A6050sA100	60.0	50.8	15.9	Borosilicate Fiber	9.4	10	45.0	Step	A66-PLZR-KIT	Stainless Steel Interlock
A6664SA100	66.0	64.0	15.9	Borosilicate Fiber	9.4	20	32.0	Step	A66-PLZR-KIT	Stainless Steel Interlock

ANNULAR COMMON PART NUMBERS

DIAMETERS 82 - 99 MM - 1M STANDARD LENGTH

PART NUMBERS	RING TOP I.D.	RING BOTTOM I.D.	INPUT END	FIBER TYPE	BUNDLE DIAMETER	CONE ANGLE	WORKING DISTANCE	STYLE	POLARIZER PART NUMBERS	STANDARD SHEATHING
A8278SA100	82.0	78.0	15.9	Borosilicate Fiber	11.5	32	30.5	Step	A82-PLZR-KIT	Stainless Steel Interlock
A9989PA100	99.2	88.9	15.9	Borosilicate Fiber	6.4	20	57.9	Step	N/A	Black Polymer Over Multi-Coil



MINIMUM WORKING DISTANCE

Minimum working distance is the distance (mm) from the base of the annular to the point in space where rays from one side first intersect with rays from the other side.

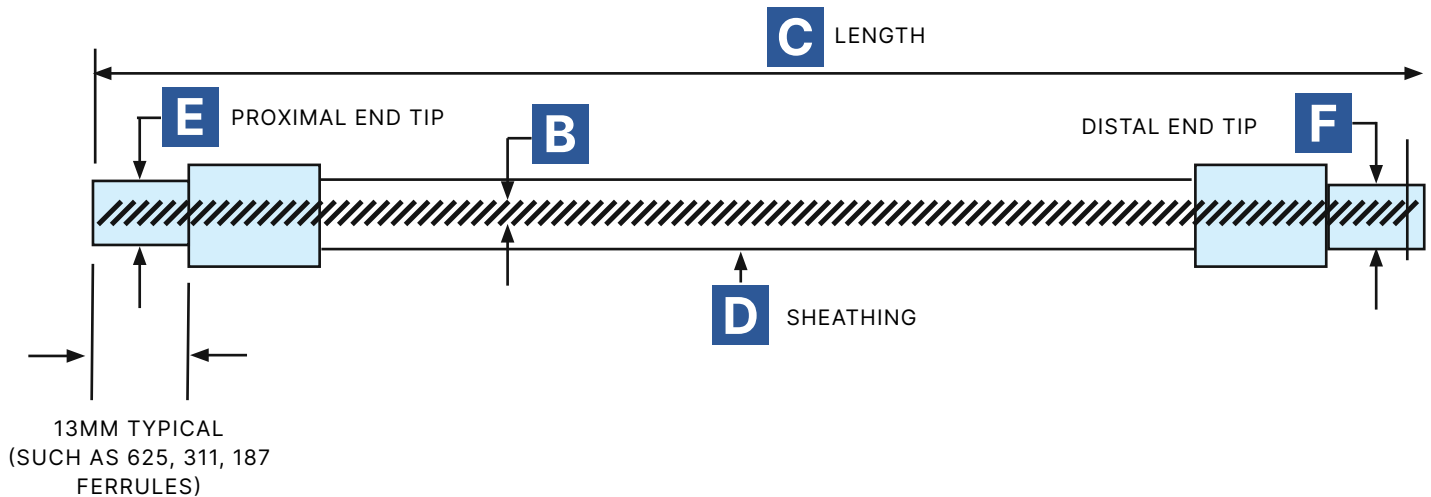
SINGLE FLEXIBLE FIBER CABLES

FLEXIBLE FOR YOUR APPLICATION

Interchangeable optical fiber components that ensure compatibility for your configuration.



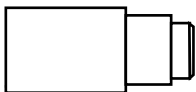
SINGLE FLEXIBLE FIBER CABLES COMMON FERRULES



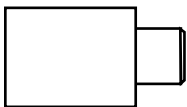
CONTACT THE FACTORY FOR YOUR APPLICATION

FERRULE NO.

615

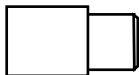


TWO STEP FERRULE
0.615"/0.714 "(FOSTEC)

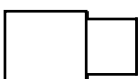


15.87 MM

625

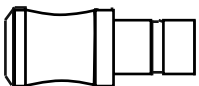


15.87 MM



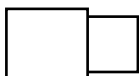
15.87 MM

588



14.9 MM (VOLPI)

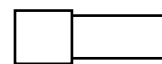
562



14.3MM (DOLAN/SETRA)

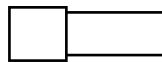
FERRULE NO.

472



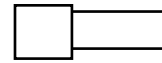
12MM (FOSTEC)

390



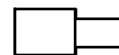
10MM (FOSTEC)

312



7.92 MM (FOCUS LENS)

311



7.90 MM

298



7.57 MM (ACMI)

270



6.86 MM (MITUTOYO)

187



4.76 MM

ANNULAR FIBER RING SELECTION GUIDE

ACTIVE FIBER BUNDLE DIAMETER (MM)

- 13 = 3.17
- 25 = 6.35
- 38 = 9.52
- 50 = 12.70



= CUSTOM FIBER OPTIC ASSEMBLY



- M = SMOOTH BLACK POLYMER OVER MONOCOIL
- S = RIDGED STAINLESS STEEL INTERLOCK
- P = BLACK PVC



BUNDLE LENGTH IN CM

S.S.
INTERLOCK

BLACK
PVC

BLACK POLYMER
OVER MONOCOIL



ALL DIMENSION IN MM

- 4.76
- 6.86 (MITUTOYO)
- 7.57 (ACMI)
- 7.90
- 7.92
- 10 (FOSTEC)
- 12 (FOSTEC)
- 14.3 (DOLAN/SETRA)
- 14.9 (VOLPI)
- 15.87
- 15.87
- 15.87
- 15.6/18.2 (TWO STEP - FOSTEC)

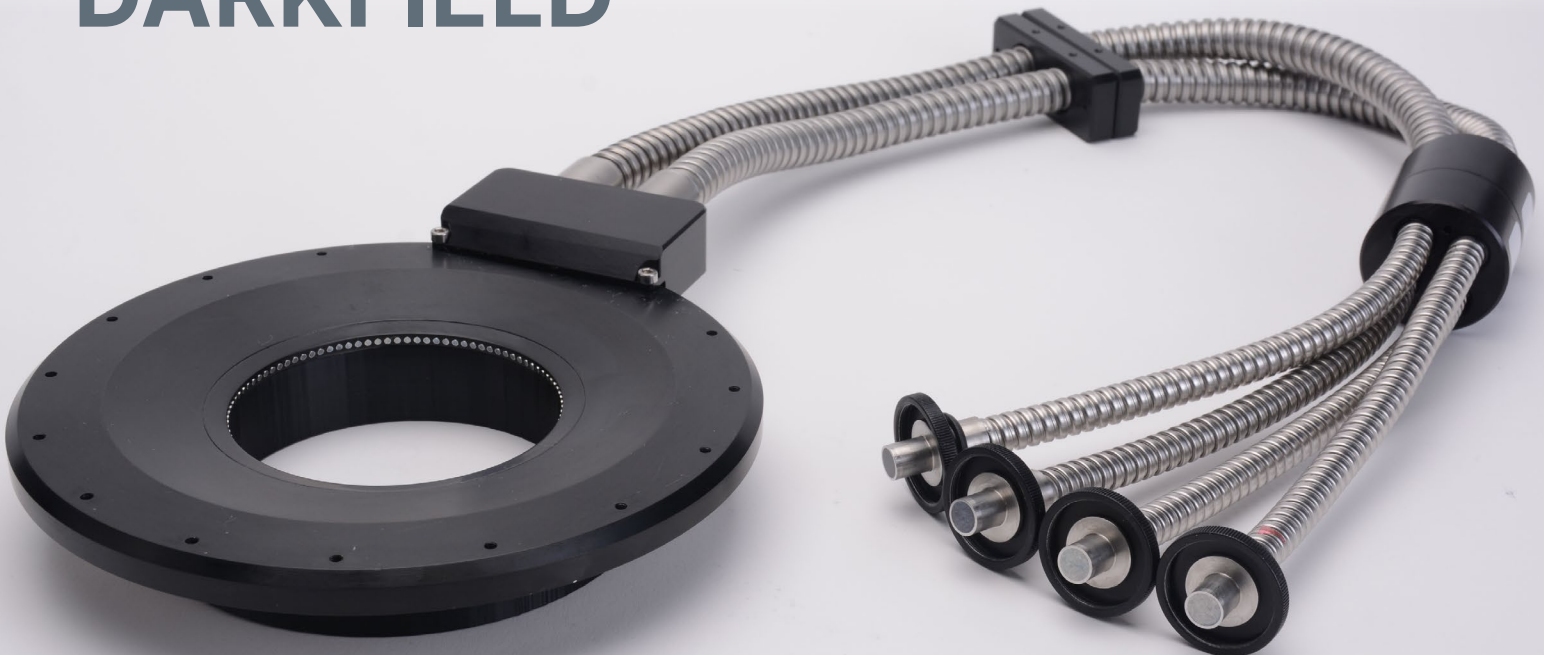
SPECIALTY FIBER OPTICS GOOSENECKS



We have a range of single and many armed gooseneck fiber designs, with and without secondary focusing optics - contact us with your specific requirements.

SPECIALTY FIBER OPTICS DARKFIELD

We have extensive experience in darkfield fiber optic systems. Contact us with your application requirements.



OPTIONS / ACCESSORIES

ANNULAR MOUNTING ADAPTERS

NEW NUMBER PART	LEICA (B&L)	NIKON	OLYMPUS	MEIJI	NAVITAR	OTHER	TYPE	THREADS
SA6631MM38X0.75	GZ-4						MALE THREADS	M38 X 0.75
SA6647MM52X1.0	S OR M SERIES						MALE THREADS	M52 X 1
SA6638MM48X0.75	STEREO STAR	SMZ1, SMZ 2B, SMZ T2					MALE THREADS	M48 X 0.75
SA6633MU1.5X0.75	SZ 1-5						MALE THREADS	1.5-32 UNC
SA6649MH55X0.75		645/745					MALE THREADS	M55 X 0.75
SA6642MM48X0.75		SMZ-1 SMZ-1B	SZ11, 30, 40				MALE THREADS	M48 X 0.75
SA6644MM50X0.75				EMZ, EMF			MALE THREADS	M50 X 0.75
SA6646C	MONOZOOM 6		SY4			ZOOM 65		COLLAR
SA6654C		SMZ-10	SY4				COLLAR	COLLAR
SA6628C						ZOOM 70		COLLAR

POLARIZERS

ITEM	POLARIZER / ANALYZER KITS FOR ANNULAR FIBER OPTICS
A60-PLZR-KIT	POLARIZER /ANALYZER KIT FOR USE WITH A6050SA036 FIBER RING
A66-PLZR-KIT	POLARIZER /ANALYZER KIT FOR USE WITH A6664SA036 FIBER RING
A82-PLZR-KIT	POLARIZER /ANALYZER KIT FOR USE WITH A8278SA036 FIBER RING

ONE-TO-MANY FIBER OPTIC SPLITTERS
STAINLESS STEEL MONOCOIL
BLACK PVC OVER MONOCOIL
OBEDIENT SHEATHING

ABOUT TECHNIQUIP



LIGHTING HELPS MAKE THE IMAGE

If your work relies upon obtaining a precise image then you know the importance of lighting and likely also know that lighting is in the midst of a dramatic renaissance - legacy technologies are giving way to LED. TechniQuip's products are on the forefront of this shift.

WE SOLVE LIGHTING PROBLEMS

We have completed thousands of projects, so we don't scramble around searching for a good approach, we work to get the job done cleanly, at the highest quality and at an appropriate price —and wouldn't consider any project done until you are 100% satisfied. Our precision-designed lighting systems enable a deep range of scientists, engineers and technology professionals (and their machines) to see better: with better results and productivity.

CALIFORNIA DESIGN / BUILD CENTER

Our Design / Build Center is thoughtfully equipped with modern design and manufacturing tools, resources, skills, and methods. As such we have been fortunate to serve the lighting needs of the world's best companies and institutions.

WEBSITE:

www.techniquip.com

INDUSTRY:

Electrical/Electronic Manufacturing

COMPANY TYPE:

Privately Held

HEADQUARTERS:

530 Boulder Ct., Suite 103

Pleasanton, CA 94566 USA

United States

Toll-Free: (888) 414-0789

Main Line: (925) 251-9030

Europe

41-44-5865598

Patric@techniquip.com



www.TechniQuip.com

530 Boulder Ct., Suite 103 Pleasanton CA 94566 - USA

Office: 925.251.9030 | Orders@TechniQuip.com

